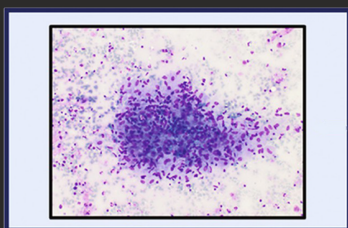


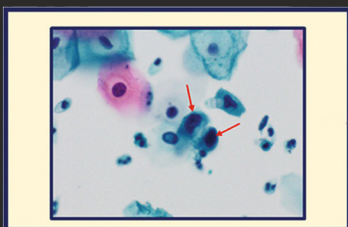
SEDICYT™

Combining the SEDIPREP® + CY-PREP® Technologies

Reinventing Diagnostic Cytopathology



CY-PREP® Processing of thin layer cell morphology slide



SEDIPREP® Concentration of liquid cell specimen



Specimen :

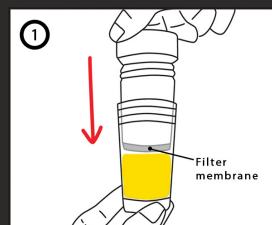
Aspirates, urine, sputum, serous effusions, washings, brushings and all other non-gynaecological fluids...

SEDICYT™ = Making Diagnostic Cytopathology Analysis ACCURATE

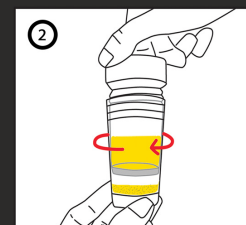
Combining the patented SEDIPREP® technological advancement in sample preparation for recovery of up to **100%** of investigative material from specimen, which is then processed with the CY-PREP® Dual Filtration Liquid Based Cytology Processor for the transfer of all the recovered investigative material onto a glass slide in a thin-layer format for microscopic analysis

THE SEDIPREP® PROCESS

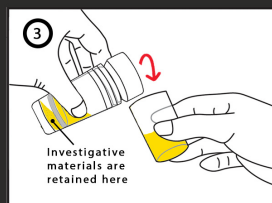
Up to 100% of investigative materials are concentrated and retained with the SEDIPREP® Sample Preparation device



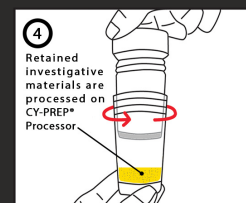
Slid Filter Unit axially into Container unit which holds the cellular sample



Fasten Filter Unit (clockwise) into the Container Unit by the mechanical screw thread system



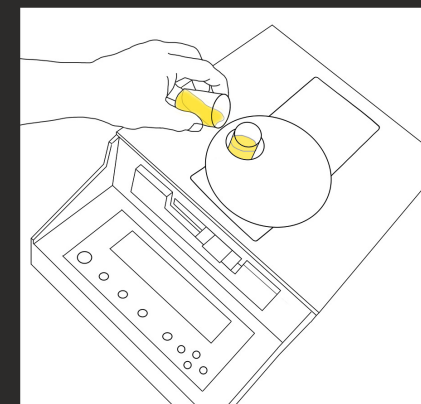
Decant the filtrate (supernatant) that has been forced through the filter membrane into the Filter Unit during the fastening step



Unfasten the Filter Unit (counter-clockwise) from Container Unit. Use the calibrated investigative materials volume left in the Container Unit for analysis

THE CY-PREP® PROCESS

All investigative materials retained from the SEDIPREP® Sample Preparation steps, are transferred onto a glass slide in a thin layer format with the CY-PREP® Processor



Better Sample Preparation, Better Detection Sensitivity, Better Diagnostic Accuracy

Ordering information :

- ☐ SEDIPREP®- PS 5.0 (Code : PS50-0300)
- ☐ CY-PREP® Filter Slide Pack (Code : 6887-0300)